



Medium

### X1110 S3

Low-cut leather safety shoe for protection in style

Upper	Nappa Action Leather
Lining	Cambrella
Footbed	SJ foam footbed
Midsole	Anti-puncture Textile
Outsole	PU/PU
Toecap	Composite
Safety standard	S3 / SRC
Size range	EU 35-47 / UK 3.0-12.0 US 3.0-13.0 / CM 23.0-31.0
Sample weight	0.615 kg
Norms	EN ISO 20345:2011 ASTM F2413:2018



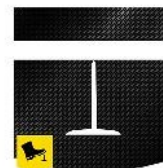
BLK



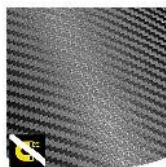
**S3**  
S3 safety shoes are suitable for work in an environment with high humidity and presence of oil or hydrocarbons. These shoes also protect against perforation risk of the sole, and foot crushing.



**Composite toecap**  
Metalfree and lightweight, no thermal or electrical conductivity



**SJ Flex**  
Metalfree puncture resistant material, which is lighter and more flexible than steel. The material is not thermal conductive. Covers 100% of the surface of the last bottom.



**Metal free**  
Metal free safety shoes are in general lighter than regular safety shoes. They are also very beneficial for professionals who have to pass through metal detectors several times a day.



**Oil & fuel resistant**  
The outsole is resistant against oil and fuel.



**SRA slip resistance**  
Slip resistance is one of the most important features of safety and occupational footwear. SRA slip resistant soles are tested on a ceramic tile with dilute soap solution.

**Industries:**

Automotive, Cleaning, Construction, Logistics, Mining, Oil &amp; Gas, Industry, Uniform

**Environments:**

Dry environment, Muddy environment, Uneven surfaces, Wet environment

**Maintenance instructions:**

To extend the life of your shoes, we recommend to clean them regularly and to protect them with adequate products. Do not dry your shoes on a radiator, nor nearby a heat source.

	Description	Measure unit	Result	EN ISO 20345
<b>Upper</b>	<b>Nappa Action Leather</b>			
	Upper: permeability to water vapor	mg/cm <sup>2</sup> /h	1.8	≥ 0.8
	Upper: water vapor coefficient	mg/cm <sup>2</sup>	19	≥ 15
<b>Lining</b>	<b>Cambrella</b>			
	Lining: permeability to water vapor	mg/cm <sup>2</sup> /h	39.2	≥ 2
	Lining: water vapor coefficient	mg/cm <sup>2</sup>	314.3	≥ 20
<b>Footbed</b>	<b>SJ foam footbed</b>			
	Footbed: abrasion resistance	cycles	400	≥ 400
<b>Outsole</b>	<b>PU/PU</b>			
	Outsole abrasion resistance (volume loss)	mm <sup>3</sup>	110	≤ 150
	Outsole slip resistance SRA: heel	friction	0.36	≥ 0.28
	Outsole slip resistance SRA: flat	friction	0.33	≥ 0.32
	Outsole slip resistance SRB: heel	friction	0.14	≥ 0.13
	Outsole slip resistance SRB: flat	friction	0.19	≥ 0.18
	Antistatic value	MegaOhm	265	0.1 - 1000
	ESD value	MegaOhm	N/A	0.1 - 100
	Heel energy absorption	J	24	≥ 20
<b>Toecap</b>	<b>Composite</b>			
	Impact resistance toecap (clearance after impact 100J)	mm	N/A	NA
	Compression resistance toecap (clearance after compression 10kN)	mm	N/A	NA
	Impact resistance toecap (clearance after impact 200J)	mm	14.5	≥ 14
	Compression resistance toecap (clearance after compression 15kN)	mm	22	≥ 14

Sample size: 42

Our shoes are constantly evolving, the technical data above may change. All product names and brand Safety Jogger, are registered and may not be used or reproduced in any format, without written consent from us.

**Solutions for every workplace**

INDUSTRIAL PROFESSIONAL TACTICAL TIGER GRIP

**ENGINEERED  
IN EUROPE**

www.safetyjogger.com

[www.pls-shop.co.uk](http://www.pls-shop.co.uk)